

# CEI Big Bets

**Learning Network: Competency-Based/Personalized Learning (CB/PL)**

---

May 10, 2018

# CEI's Goal for CB/PL

---

Colorado school districts will begin building education systems that promote student agency by tailoring learning to students' strengths, needs, and interests and where each student will progress through and exit the system based on demonstrated mastery of postsecondary and workforce readiness, so they are prepared for postsecondary learning, work, and life.

# Two Networks: Learning and Design

---

## Learning Network March – May 2018

- Focused on districts that want to learn about CB/PL and implementation strategies and challenges
- Committed to exploring how CB/PL can address equity issues

## Design Network 2018-19 School Year

- Support districts in implementing key steps and actions aligned to their CB/PL vision and goals for 2018-19

# CEI's CB/PL Theory of Change

---

*Consistent across all big bets*

## Mindsets

- **Equity**
- User-centered
- Future-facing
- Results-oriented
- **Student and teacher agency**

*Specific to each big bet*

## Practices

- Climate and culture
- Articulated and transparent competencies
- Teaching and learning

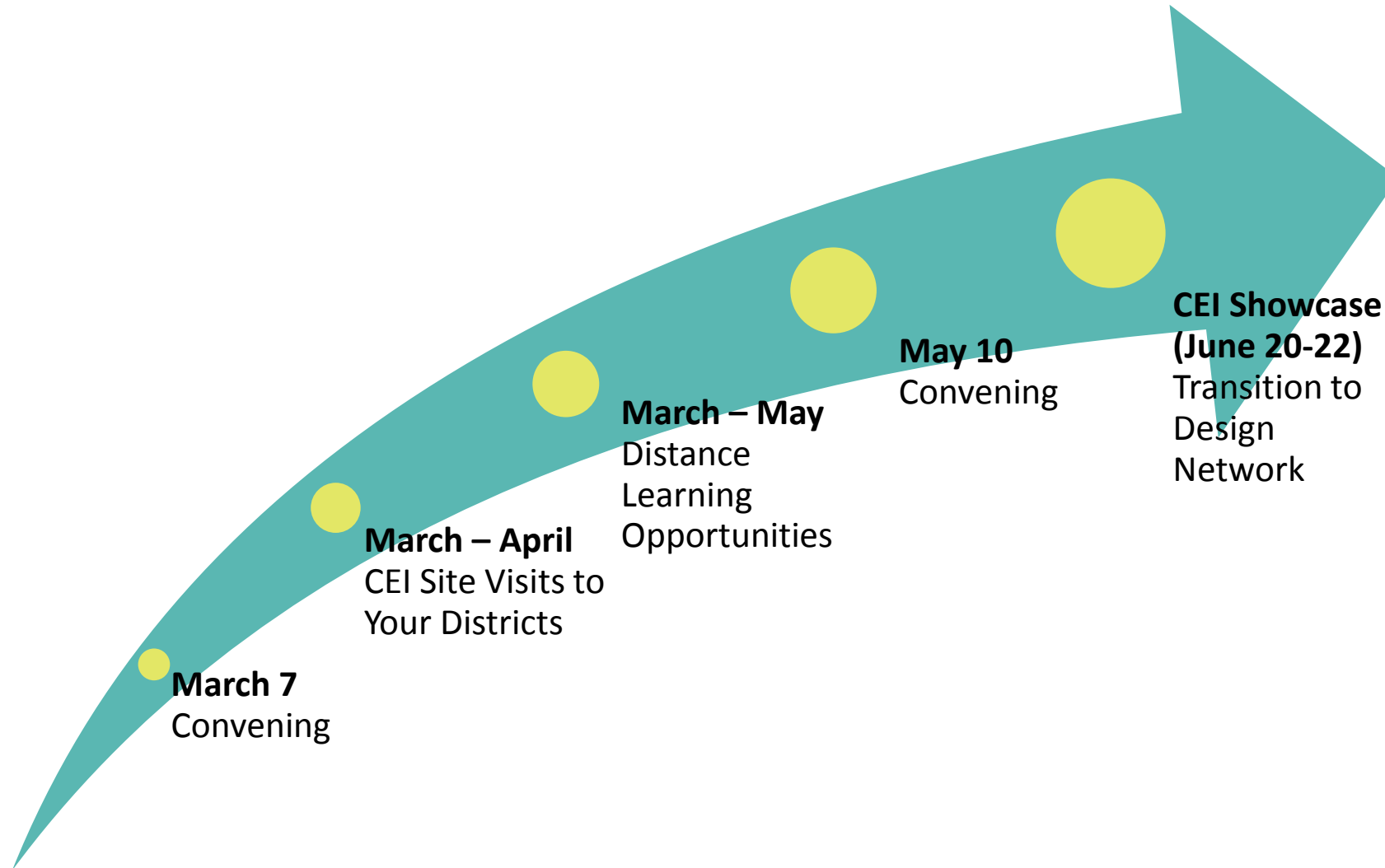
*Consistent across all big bets*

## Scale

- **Leadership**
- **Community engagement**
- Systems alignment
- Networked learning
- Change management

# Learning Network Arc

---



# Site Visits: What We Learned

---

- Lots of competency-based and personalized learning activities going on across the network
- Excitement about moving forward and building on the current work
- Consistent interest in strategies for community engagement
- Much to learn from one another and from other districts/schools across the state/country
- Lack of clarity of what the "aspirational state" looks like
- Need to identify some next steps and a goal for the 2018-19 school year

# Goals for Today:

## Moving from Learning to Action

---

- Network and foster connections with other district teams
- Reflect on current student experiences and the aspirational student experience in our district
- Identify current state and ideal state for the end of the 18-19 school year for our district's CB/PL work
- Begin developing a process and sequence of actions to move toward our ideal state

# Agenda for CB/PL Session

---

- District introductions
- Student voices
- World Café
- Student journey
- District journey
- Lunch
- Current and future state
- District mapping
- Closing and network next steps



# Norms

---

**Be present and participate**

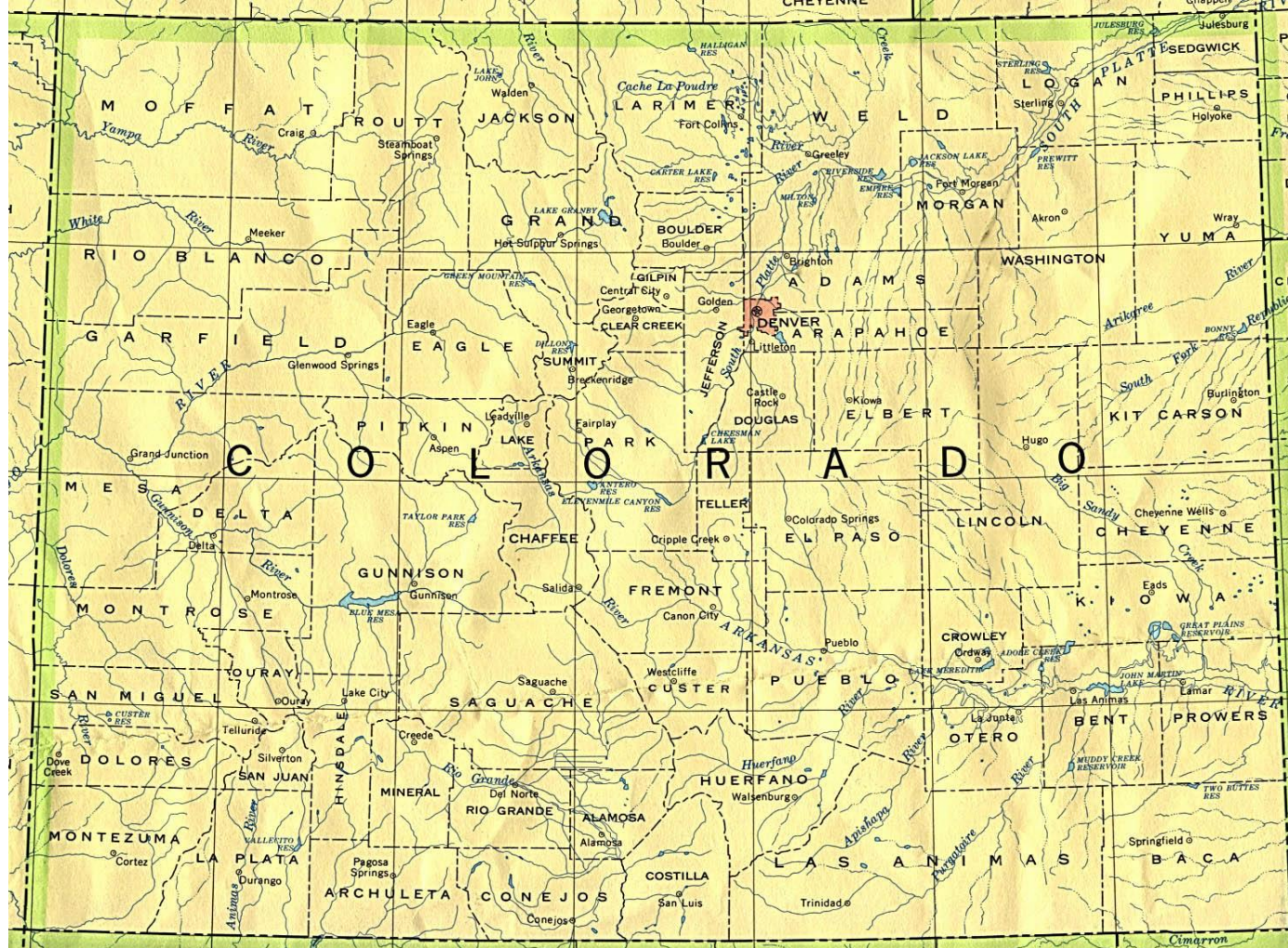
**Speak your “truth”**

**Monitor your balance between listening and speaking**

**Help to ensure that all voices are heard**

**Expect and accept non-closure**

# District introductions



# Student Voices

---



# Activity: Identifying and Designing for Student Need

---

**How might we design for student need in personalized learning and competency-based learning environments?**

# Think Like a Designer

---



# Framing the Student Voices

---

“Personalized learning is a progressively student-driven model in which students deeply engage in meaningful, authentic, and rigorous challenges to demonstrate desired outcomes.”

- Zmuda, Curtis, & Ullman, 2015

# Student voices: background

---



# Student Voices

---

- <http://www.buzzsprout.com/168838>
- Listen to as many as you can
- **Bolded students** are highly encouraged
- Take notes—what are you hearing related to **students deeply engaging in meaningful, authentic, and rigorous challenges to demonstrate desired outcomes?**





# World Café

---



## ROUND 1

Find a group of 3-4 people with the same color card (not from your district if possible!)

## ROUND 1 PROMPT

How does what you heard apply to your context (elementary, middle, high, district-level)?

What did you learn from students *outside* of your level that informs your work *within* your level?

## ROUND 2

Find a group of 3-4 people with as many different **colors** as you can (not from your district if possible!)

## ROUND 2 PROMPT

Discuss how students talk about learning across levels. What does this mean for the 13-year journey students take in our education system?



# Break

---



# Alphabet Soup...

---



mmmmmm!

# District Debrief

---

- What did you learn from the student voices and your discussions?
- How does this apply to your context?
- What do you want to ask students in your district about learning?

**TO DO: Write 3-5 questions you will ask students between now and the end of the year.**



# Student Learning Map



# Developing an Aspiration

---



# Lunch

---

**Come back together at 12:15 pm.**

For districts who still need to finish up Showcase registrations, please come talk with Sarah during lunch.

# And the winner is...

---



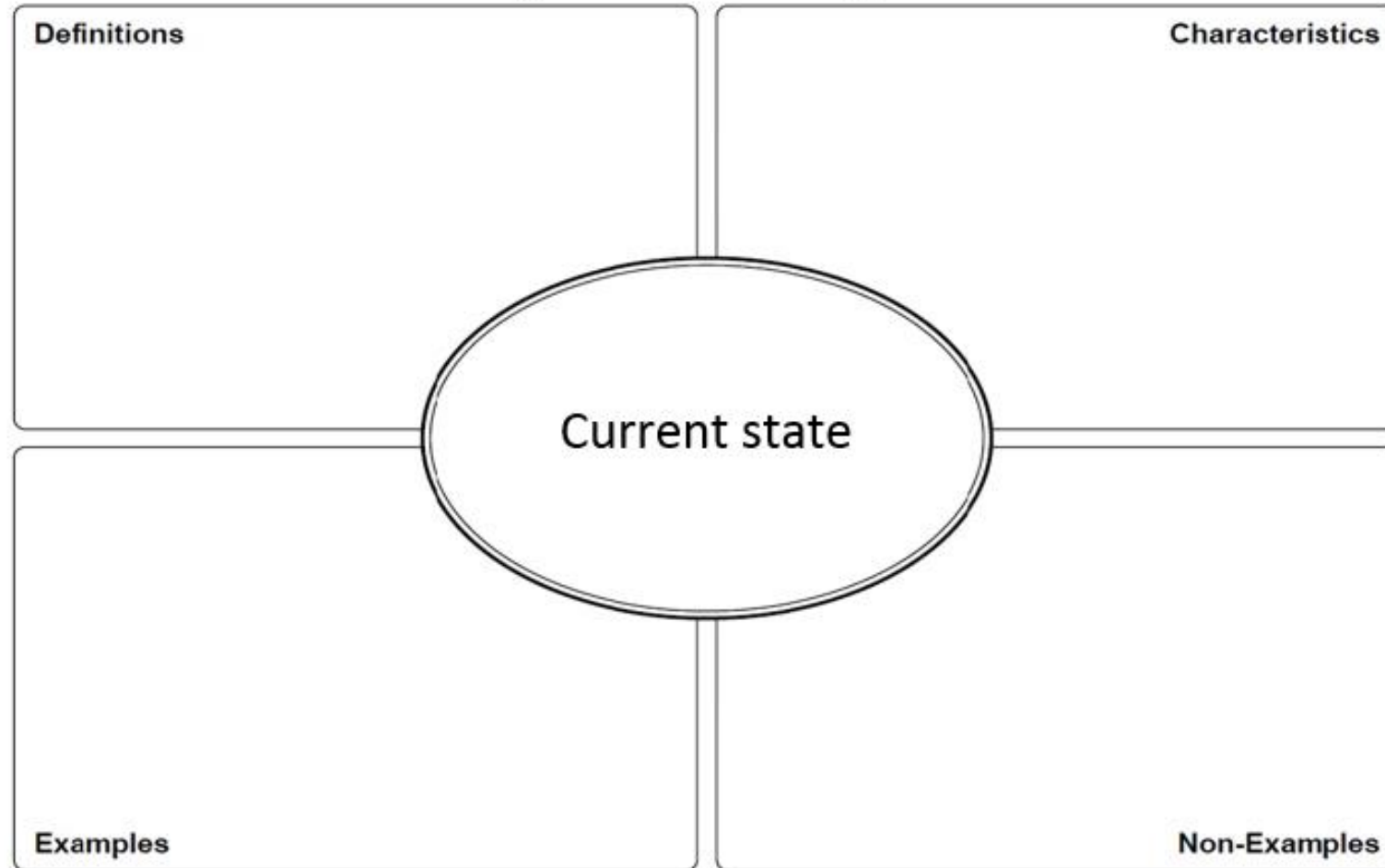


# Colorado Education Initiative

# Your current and future states

---

**Fruyer Model Diagram**



# Exhibition

---



# District Debrief

---

What feedback did you hear?

What information or data is still missing for you to truly understand your current state?

How might you find this information or data?



# Break

---



# Charting a Course

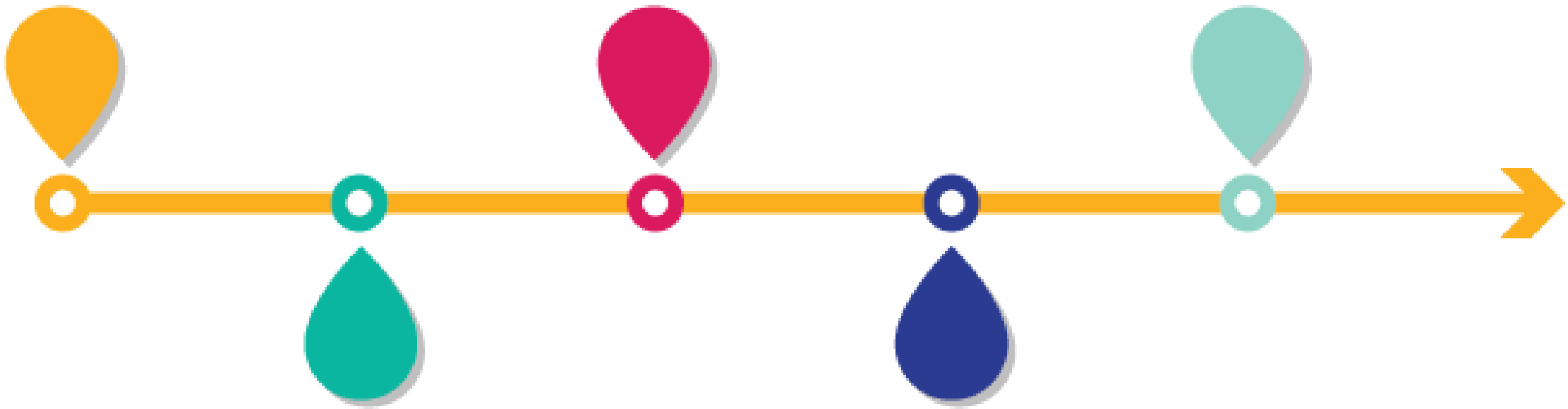
---



# Possibly Wrong & Definitely Incomplete

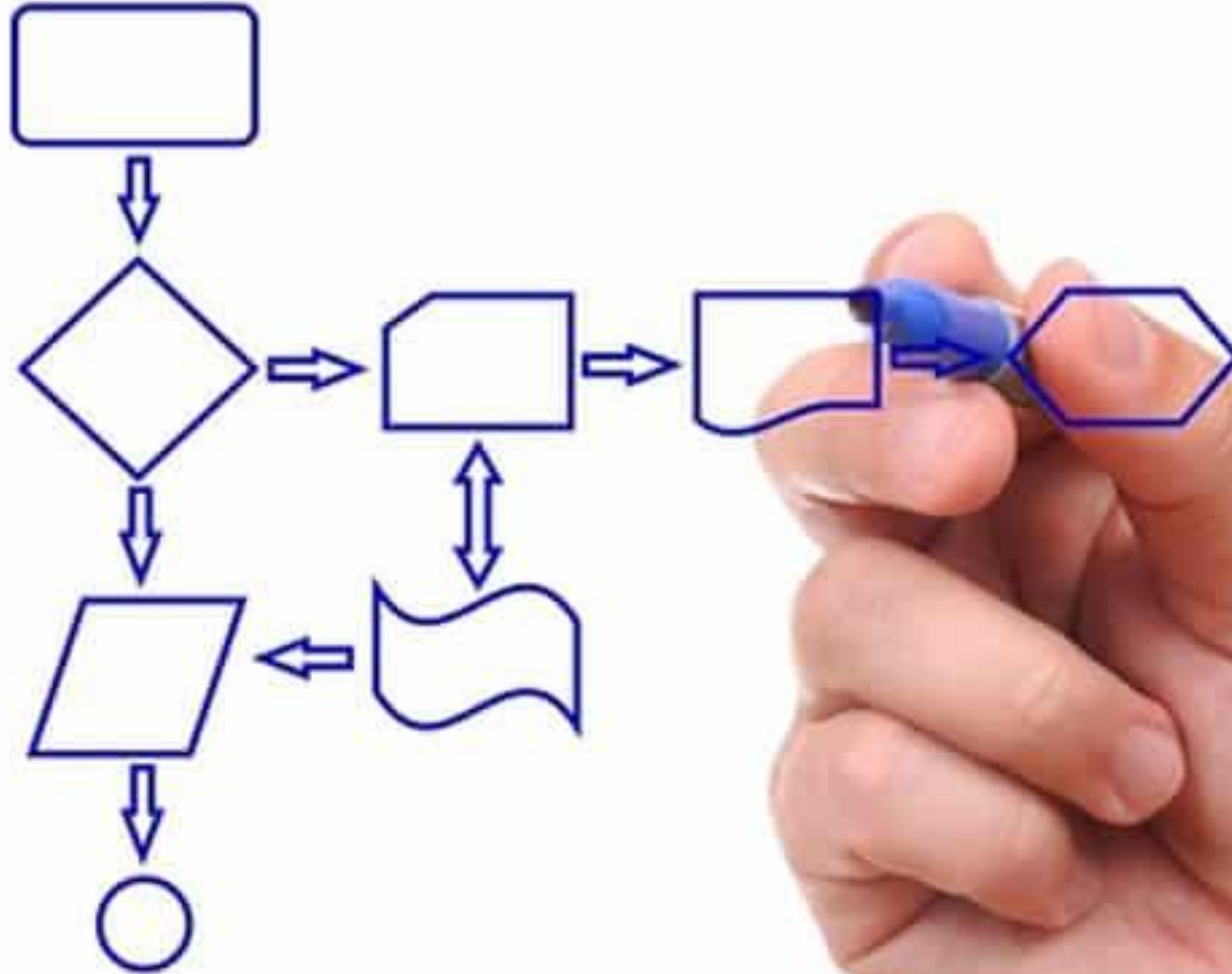
# Milestones

---



# Process Mapping

---



# Feedback

---

**Please take 5 minutes to respond to a brief survey about today's convening and this Learning Network experience overall. You can access the survey online via your phone or computer at**

**<https://tinyurl.com/CBPL51018>**



# CB/PL Learning Network at Showcase (June 20-22 in Greeley)

---

## Team planning time for 18-19 school year

- Highly encourage you all to bring some data to help enrich this planning time (*see handout for guidance*)
- Team members should also bring your notes from your conversations with students that you planned for earlier today

## Feedback opportunities with other districts in network

- CEI will facilitate opportunities for you to give/receive feedback about your planning work at Showcase based on your districts' contexts and areas of focus

## Community engagement content

- CEI is hoping to bring in an external partner to provide some professional development on community engagement for CB/PL work