

# Colorado Healthy Schools Collective Impact



# State of the State

- Colorado has over 178 districts with more than 1,800 public schools and over 50,000 teachers.
- In Colorado, over 100 districts serve less than 1,000 students.
- Many students (~75%) attend one of the largest 20 districts in the state.



# State of the State

- Healthy school grants and programs have reached over:
    - 150 districts that cover > 800,000 students in Colorado
    - ~95% of K-12 students in Colorado
  - However, a gap still exists with number of the small districts and knowing the impacts of these efforts.
-

# State of the State

## Problems impacting children and youth:

- Children and youth are not as healthy as they could be, due to inequity and other social issues, which impacts health today and future health outcomes.



# State of the State

## Problems impacting children and youth:

- Increasing student obesity rates
    - Inadequate amount of physical activity before, during and after school
    - Inadequate consumption of nutritious food at school
  - Increasing number of students have unmet needs related to social, emotional, mental and behavioral health
  - Inequitable access to health care and mental health supports for students
-

# State of the State

## Problems impacting systems:

- Increasing need for schools to address the physical, social, emotional and behavioral health needs of students
- Not all schools have the capacity or resources to include student health consistently into their environments and culture
- Schools burdened by inequitable, duplicative, and siloed approaches and resources



# What is Collective Impact?



# Activity

**At your table or with a small group:**

- 1) Introduce yourself and share your role.
  - 2) Discuss “why” your group thinks HSCI might be important and urgent for Colorado and what issues could Healthy Schools Collective Impact address.
  - 3) Write down a few thoughts from your group on an index card.
-



# Purpose Statement

The Healthy Schools Collective Impact effort will...

- Support school cultures and environments to improve health and wellness
- Help schools equitably address student health needs to meet educational goals

...by...

- Building inclusive partnerships
- Intentionally advancing health equity
- Aligning strategies, programs and resources

...so students can reach their full potential in school and life.

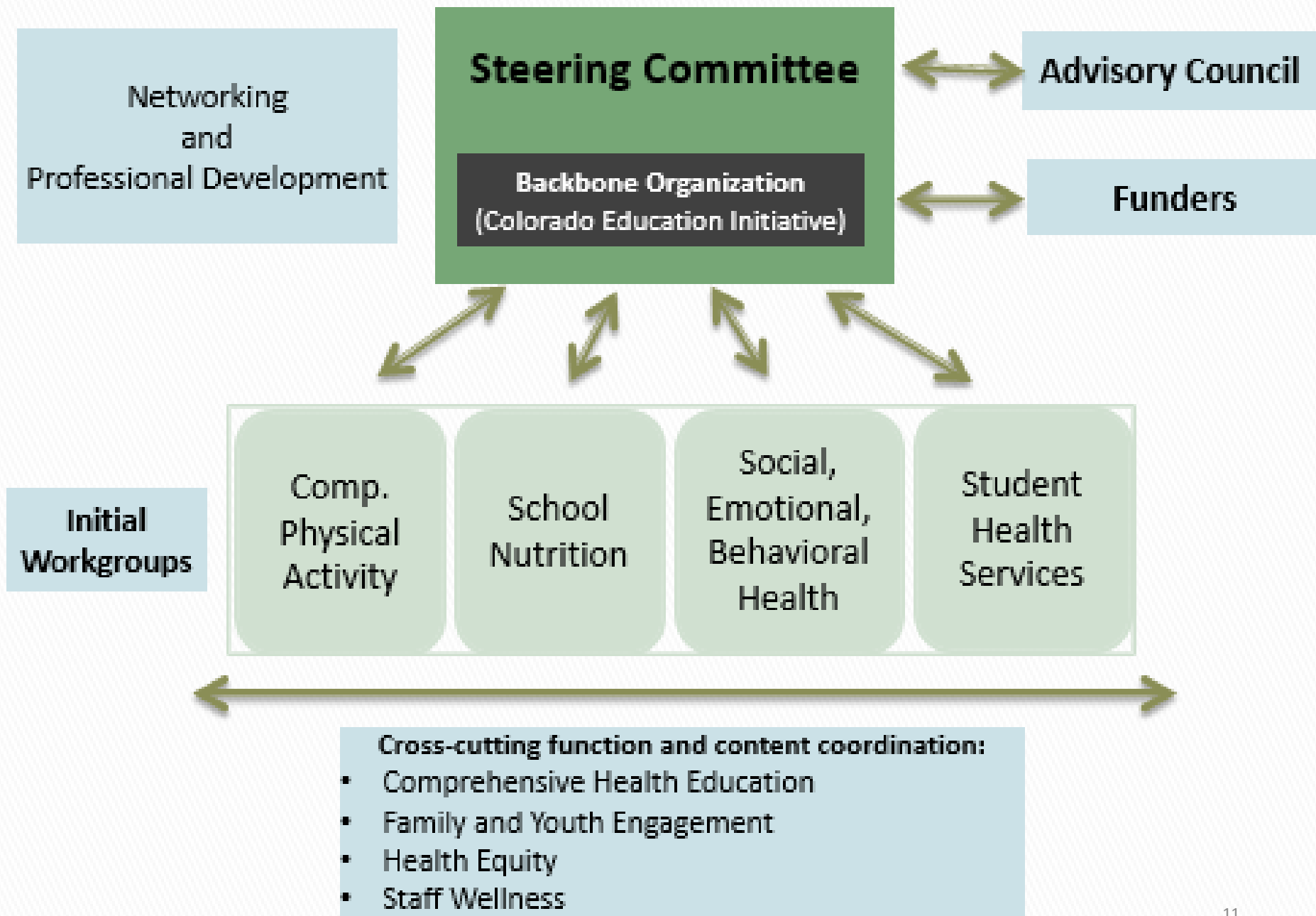


# Healthy Schools Collective Impact

**Vision:** **All** Colorado youth are **healthy** and reach their full potential.

**Bold Goal:** By 2025, all Colorado K-12 public schools provide an **environment and culture** that integrates health and wellness **equitably for all** students and staff.





# Steering Committee Members

Colorado Association of School Boards

Colorado Department of Education

Colorado Department of Public Health and Environment

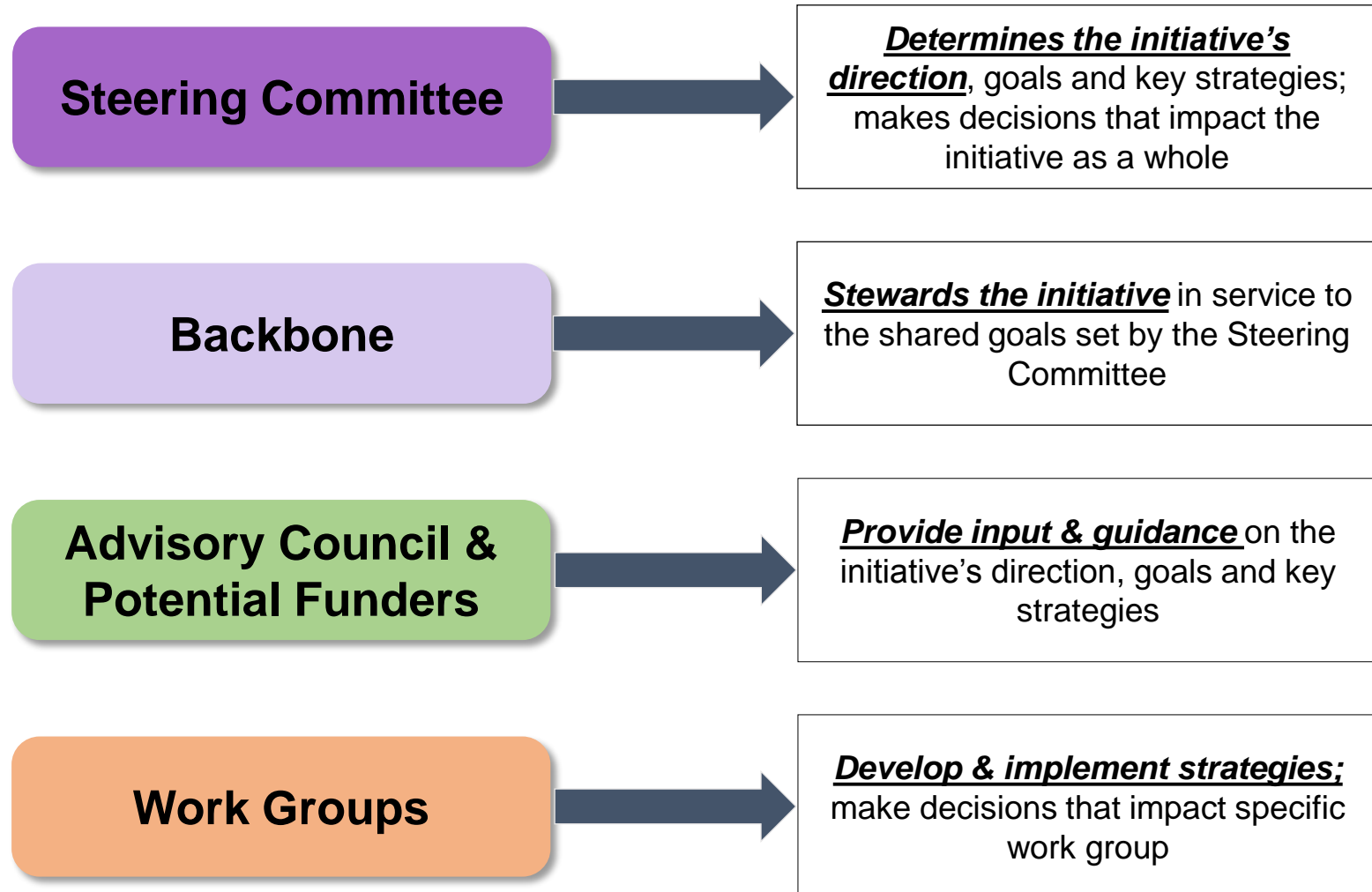
Colorado Education Initiative

LiveWell Colorado

RMC Health

The Colorado Health Foundation

# Structure

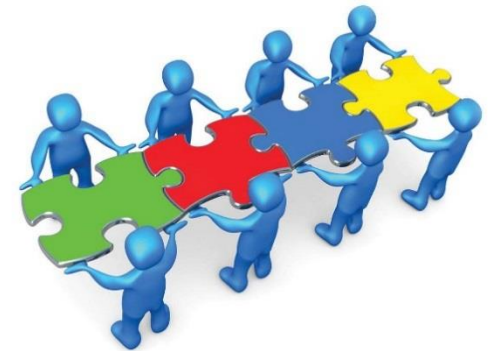


# Tiered Approach

<b>Tier I</b>	Actively participate in one of the four work groups committed to prioritizing this effort
<b>Tier II</b>	Provide content expertise, input, and guidance to work groups
<b>Tier III</b>	Receive periodic updates (no further commitment at this time)

# Work Group Efforts

- Four Work Groups meet monthly
- Developing goals and objectives
  - Assess and outline the landscape
    - Identify needs and gaps in Colorado
    - Inform definition of “Healthy Schools”
  - Define success
    - Help identify content areas measures
- Structure the work
  - Set topic priorities
  - Align strategies and action steps



# Initial Strategies

- Policy, Advocacy, and Accountability
- Staffing & Training
- Marketing, Communication, and Engagement
- Standards, Curriculum, and Best Practices
- Data, Evaluation, and Research
- Funding



# Work Group Co-Leads

## Behavioral Health

- ▶ **Finessa Ferrell**, Colorado Education Initiative, Director, Health and Wellness
- ▶ **Emilie Davidson**, Colorado Department of Education, Project AWARE Program Manager, Health and Wellness

## Nutrition

- ▶ **Shawn St. Sauveur**, Denver Public Schools, Wellness Specialist
- ▶ **Andrea Walker**, Thompson School District, Wellness Specialist

## Comprehensive Physical Activity

- ▶ **Terry Jones**, Colorado Department of Education, Health and PE Senior Consultant, Health and Wellness
- ▶ **Andrea Willis**, Douglas County School District, Healthy Schools Lead

## Student Health Services

- ▶ **Deborah Foote**, Oral Health Colorado, Executive Director
- ▶ **Kim Erickson**, The Consortium, Executive Director

# Why Join This Initiative?

- Play an instrumental role in shaping a common, statewide direction for healthy schools in Colorado
  - Provide leadership and expertise to:
    - Eliminate disjointed services to schools
    - Better leverage resources and funding for healthy schools
  - Connect with and learn from peers
  - Champion school health and wellness efforts in Colorado
  - Increase their own reach and impact
-

# Example of Potential Strategies in Action

## Shared Measurement Systems

- Healthy Kids Colorado Survey (HKCS)
  - Middle and high school student data
- Colorado Healthy Schools Smart Source
  - All levels school data on policies and practices



# Purpose OF HKCS and Smart Source

**1) Improve student and school data collected.**

**2) Streamline systems and efforts to reduce the burden on schools.**

**3) Increase the number of schools assessing policy and practice and using student health data.**

# Smart Source Overview: Content Areas

**Nutrition**

**Health Education**

**Physical Activity  
& Education**

**Counseling,  
Psychological, &  
Social Services**

**Family,  
Community, &  
Student  
Involvement**

**Health  
Promotion for  
Staff**

**Health Services**

**Healthy & Safe  
School  
Environment**

**General Health  
& Wellness**

# Smart Source Overview: Timeline

## Year 1 (2013): Planning

- Conduct scan of current data collection tools
- Identify key outcomes that Smart Source will measure
- Compile potential indicators aligned with key outcomes

## Years 2 & 3 (2014-2015): Piloting

- Develop pilot tool and data collection platform
- Conduct pilots using online data collection platform
- Analyze initial results and modify tool based on participant feedback

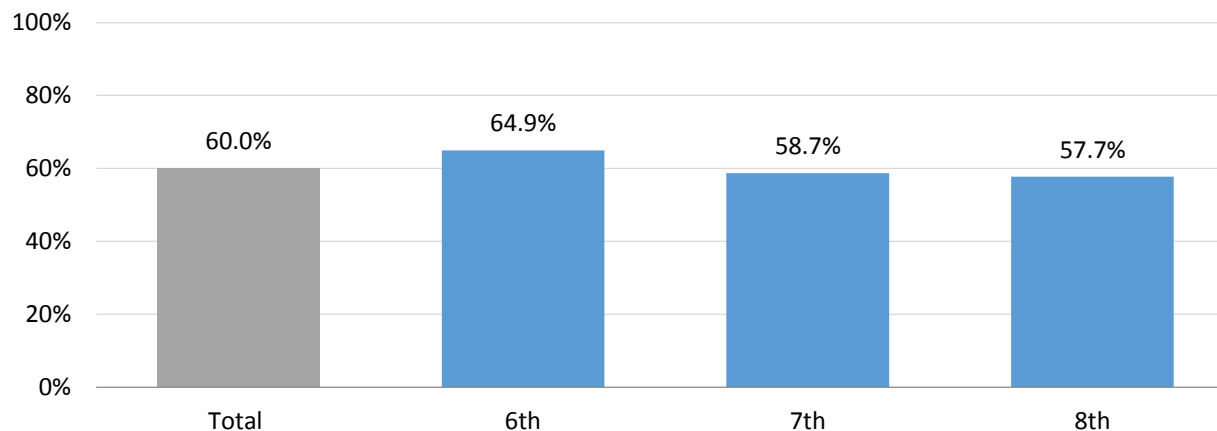
## Years 4 & 5 (2016-2017): Expanding

- Launch Smart Source statewide
- Leverage results to promote and sustain healthy school programming
- Evaluate impact of Smart Source

# Physical Education Data

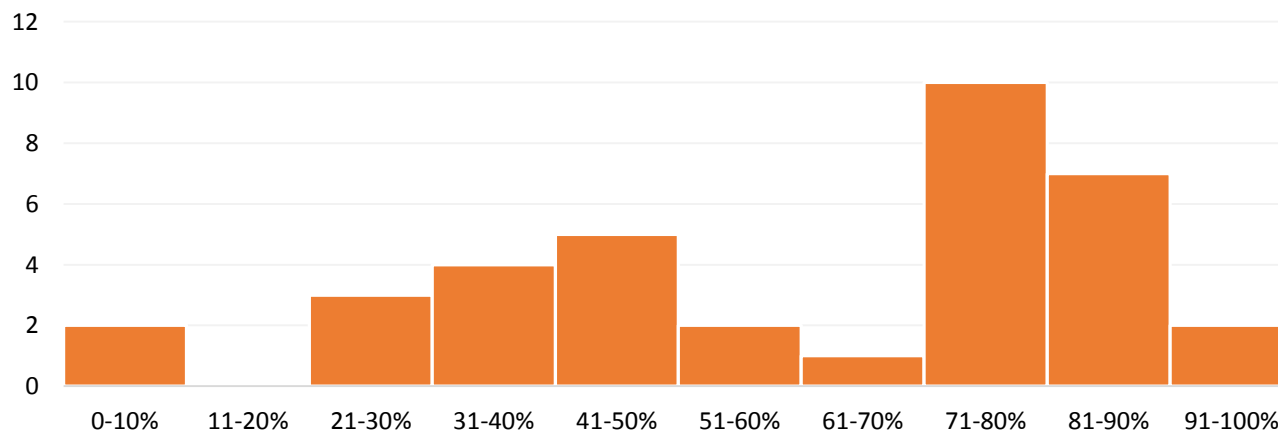
HKCS

**Percentage of Middle School Students Who Attended PE Classes  
on One or More Days in an Average Week When in School**



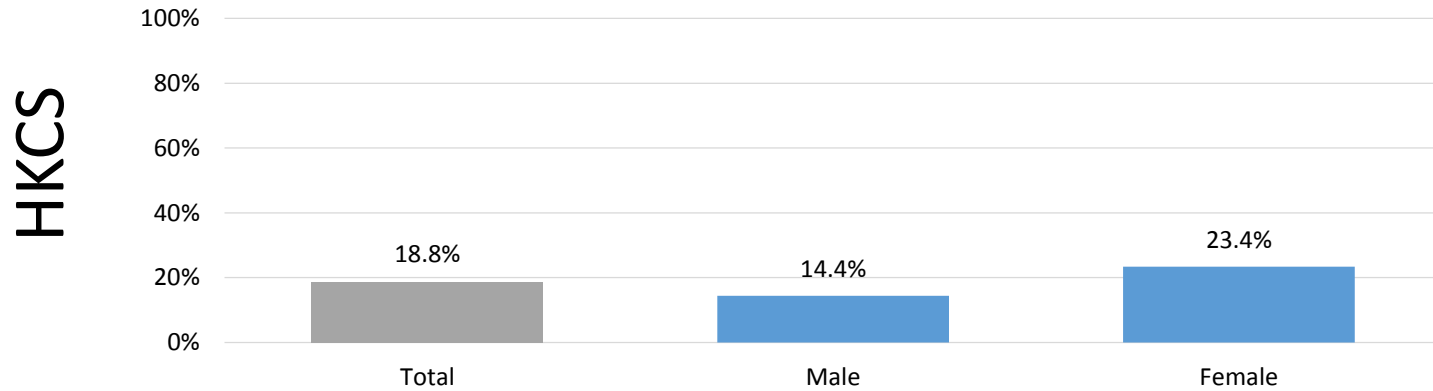
Smart  
Source

**Percentage of PE Time Secondary Schools Report that Students are  
Engaged in Moderate to Vigorous Physical Activity**



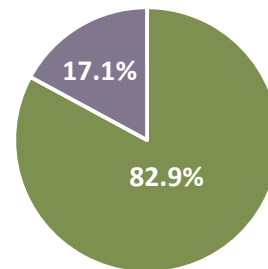
# Behavioral Health Data

Percentage of Middle School Students Who Ever Seriously Thought about Killing Themselves



Percentage of Secondary Schools Teaching Suicide Prevention through Health Education

Smart  
Source



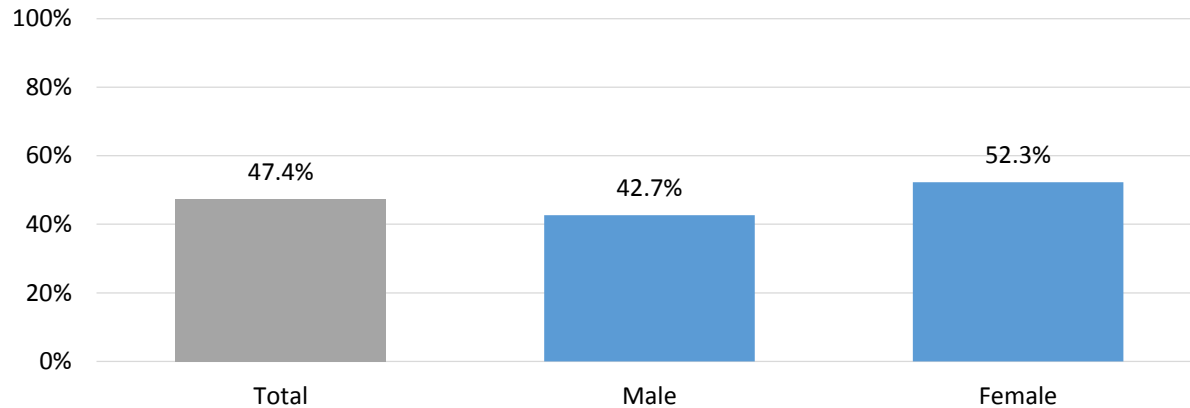
■ Yes ■ No



# Bullying Data

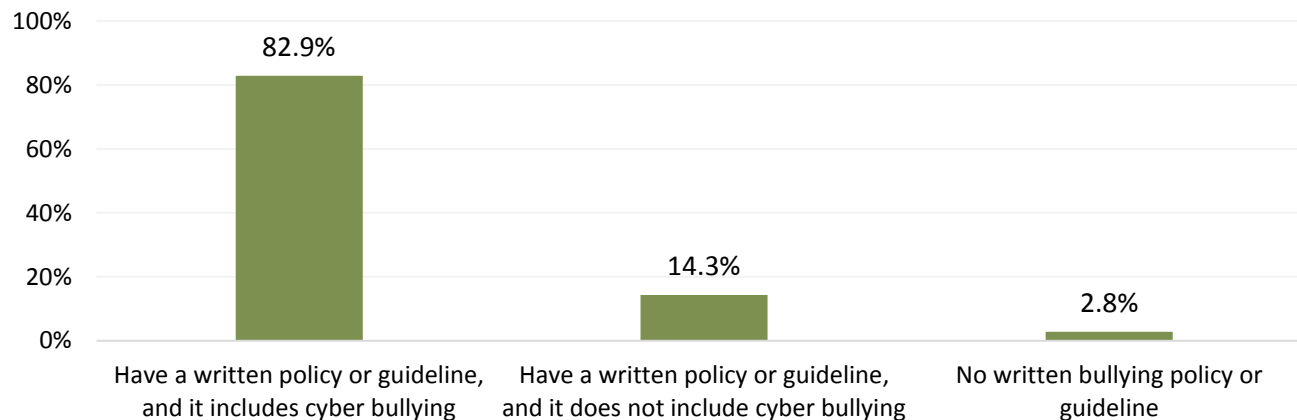
HKCS

Percentage of Middle Schools Students Who Had Ever Been Bullied on School Property



Smart  
Source

Percentage of Secondary Schools with Written Bullying Policy or Guideline



# Activity

- In your small group, grab a chart paper and markers.
- On your chart paper, write words, create pictures or icons that would show what success for Healthy Schools Collective Impact would look like in 5-10 years.



# Thank you!

Contact Amy Dillon with questions:

[adillon@coloradoedinitiative.org](mailto:adillon@coloradoedinitiative.org)

303-502-4711